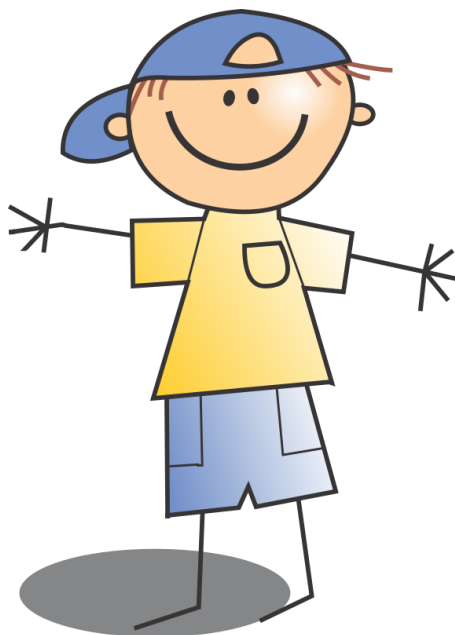




Staying Safe in the Sun





All children **MUST** wear sunhats when playing or working outside. Parents are encouraged to supply the legionnaire or beanie style hats which are also on sale from the Uniform Shop.

Children who have forgotten their hats must stay in the shade or inside.

Baseball hats are not recommended as they do not protect important exposed areas such as the tops of ears and the back of necks.

Parents may wish to apply sun cream to their child before coming to school. We recommend that children are exposed in the early morning or late afternoon



By walking to school and applying suncream in the playground will help this process. We ask that parents supply sun cream for the children to apply at lunchtime. Sun cream must be clearly labelled with the child's name and placed in the box supplied in each classroom. Parents are asked to ensure their child can apply the cream independently, in particular nose, tops of ears and back of neck.

The latest recommendations for suncream for children are sun protection factor (SPF) 25 or over depending on the child's type of skin i.e. blue eyes, fair skin and fair hair are more likely to burn than children with dark hair and dark skin. This protects against UVB. UVA protection is graded with a star rating 0 to 5, with 5 being the highest protection and therefore recommended for children. Not all

25



At lunchtime, a member of staff in each class supervises the children applying sun cream before playtime.

During the warm weather when the children eat their lunch outside, they always sit in shaded areas.

Lunchtime supervisors are asked to keep a close eye on the children at all times to watch out for signs of sunburn etc and to encourage the children to use shady areas for their play.

Large umbrellas are erected every morning by the caretaker on the picnic benches.

Reminders about safety in the sun issues are featured regularly in the school newsletter and a copy of this policy is sent out to each child's family/guardian at an appropriate time.

Safety in the sun forms part of the PSHE&C curriculum including assemblies, eg reminders about drinking water, playing sensibly, etc.

The school grounds have lots of shady areas and the school regularly seeks opportunities to extend these. These currently include the gazebo, woodland trail, willow tunnel, outside Y1 and R classrooms, outside classroom in the R playground and tree terrace.

